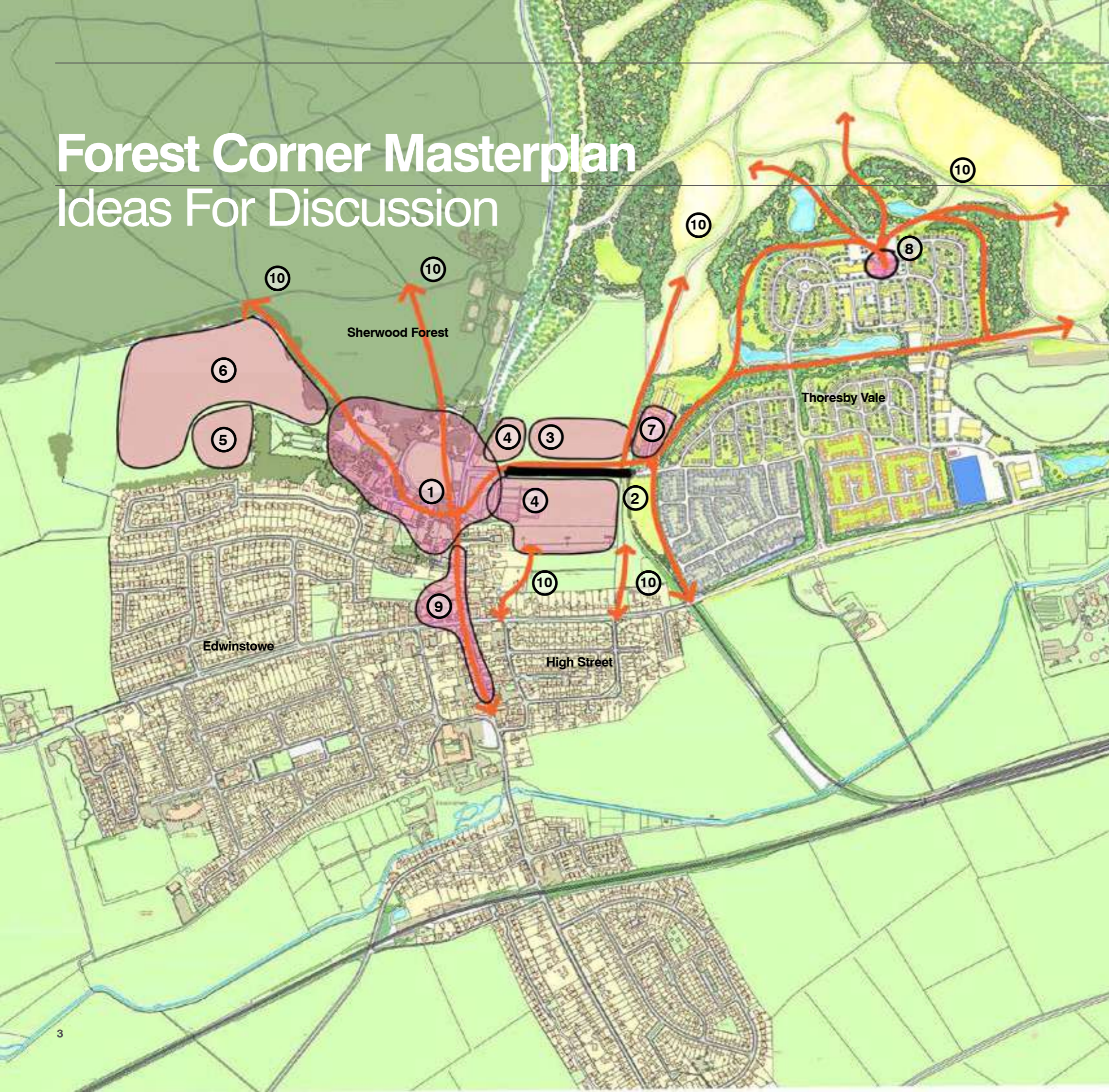


Leonard Design Architects providing initial
concepts for

THORESBY VALE CYCLE HUB



Forest Corner Masterplan Ideas For Discussion



1. Expansion and regeneration of Sherwood Corner - new facilities, events and attractions
- Relocation of the cricket ground
2. New link road from Thoresby Vale to Swinecote Rd B6034
3. New Community Sports fields including cricket club and pavilion
4. Existing car park, coach park and overflow parking
5. New parking facilities
6. New activities on the current field
7. New Forest School
8. New Cycle hub, learn to ride, cafe, family and community facilities in the former colliery workshop building
9. Support links to Edwinstowe High Street, community and business facilities and Church of St Mary
10. New and enhanced connectivity for residents and visitors - Walking and cycling

1.0 Introduction: The Thoresby Colliery Site



Nottinghamshire was at the forefront of new technology in mining with more than 80 active Collieries in the 19th and 20th century.

Edwinstowe was the last to close down in 2015.

- 1925 - Opening
- 1950 - Shafts deepened from 680m to 900m
- 1994 - Mining was re-privatised by the John Major government
- 2011 - Amendment to spoil disposal scheme allowing an increase in land used for tipping (land to the North-West)
- April 2014 - Pit Closure announcement
- July 2015 - Pit Closure (Loss of 600 jobs)
- 2015 - Harworth Group become owners of the site



At the height of production, more than 2 million tonnes of coal were extracted per annum.



THORESBY VALE CYCLE HUB

1.0 Introduction: Site Photos



THORESBY VALE CYCLE HUB

2.0 The Masterplan

Development of a unique masterplan to deliver 800 homes, heritage, leisure, office and school facilities.

The site will offer:

- retirement homes,
- residential,
- educational provisions,
- employment opportunities,
- high-quality open space
- restored country parks

● Cycle Hub

TOTAL AREA: 150.3 Ha
(371 Acres)



THORESBY VALE CYCLE HUB

2.0 The Site of the Proposed Cycle Hub

Proposed Site Plan:

Location

The site of the Cycle Hub is located on the edge of the Proposed masterplan behind the Existing building.

The existing car Park

The actual building is sited on the edge of the car park with the storage containers

Key Areas

Car park area: 2,434m²

Site of learn to ride (RED): 6,971m²

Site of Proposed building (RED Dotted line): 220m²
(the area is partially covered and composed of containers and timber panel construction:


Internal area of Container area: 68m²


Internal area of front of house


Timber panel construction: 128m²

Total Site: 12,151m²

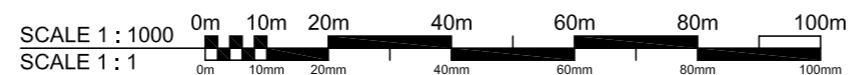


 CYCLE HUB
TOTAL SITE TRACKS
AND BUILDING: 12.151m² 1.2ha

 CYCLE HUB
MAIN BUILDING: 128m²

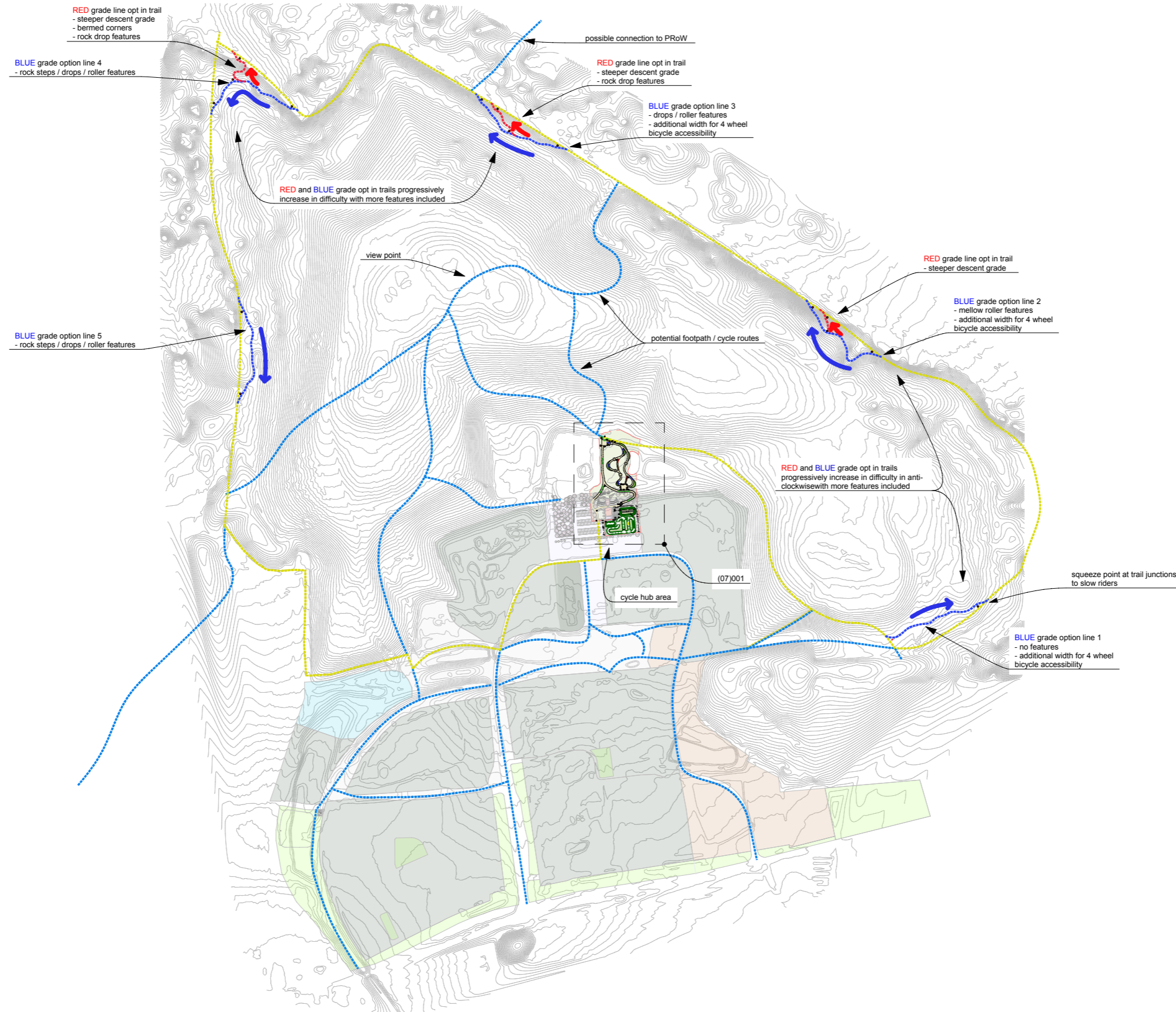
 CONTAINER STORAGE: 68m²

SK 2020 09 12 CYCLE HUB LEARN TO RIDE
THORESBY VALE MASTERPLAN SCALE: 1:1000@A4



THORESBY VALE CYCLE HUB

2.0 Cycle Routes



THORESBY VALE CYCLE HUB

2.0 Learn-to-Ride



THORESBY VALE CYCLE HUB

3.0 Proposal Options



Option 1: Two-Storey



Option 2: Single-Storey

THORESBY VALE CYCLE HUB

4.0 OPTION 1: Two-Storey Option: Ground Floor

Option 2: key points:

Option 2 offers the opportunity for a larger public space in the building: the ground floor front of house would be used as a shop and the first floor as the cafeteria which opens up views of the cycle track.

Ground floor:

Bike Shop:	26m ²
Cafe	35m ²
Kitchen:	9m ²
4 Toilets:	12m ²
Corridor:	4m ²
Bin Store:	8m ²

Cycle Hub Building: 110m² (ground floor)

Bike storage
2no 40ft containers: 60m²

The uncovered cycle area can be utilised for bike storage and bike drop off as well as repair

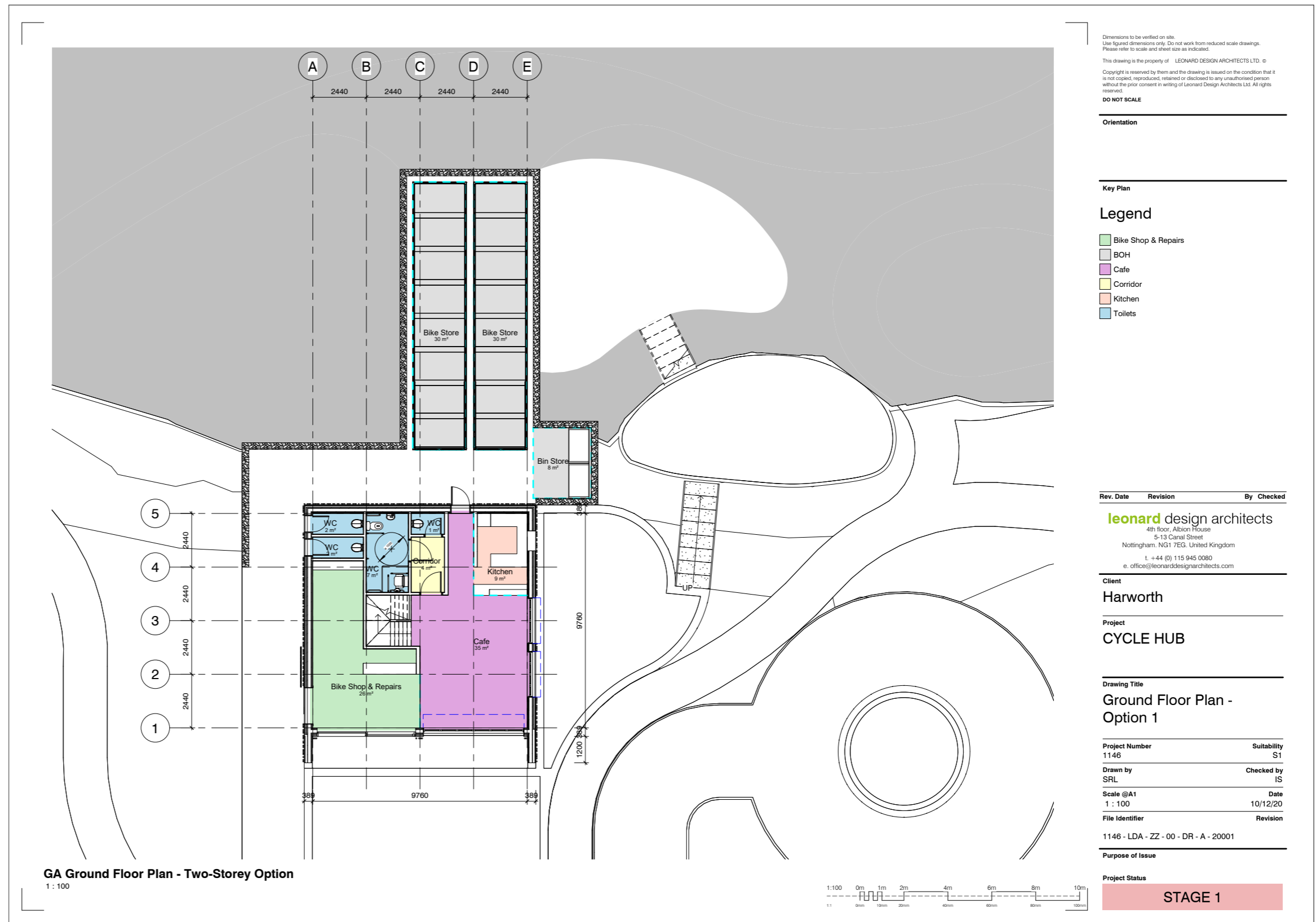
Approach and entrance

Key Diagram: The principal is that the customer comes in to the shop. When renting a cycle they progress through to the rear of the building and the container store.

The cafe is access via the stairs or the Platform lift

Terraced landscape

The feature terrace to conceal the containers and provide access to the upper levels is utilised.



THORESBY VALE CYCLE HUB

4.0 OPTION 1: Two-Storey Option: First Floor

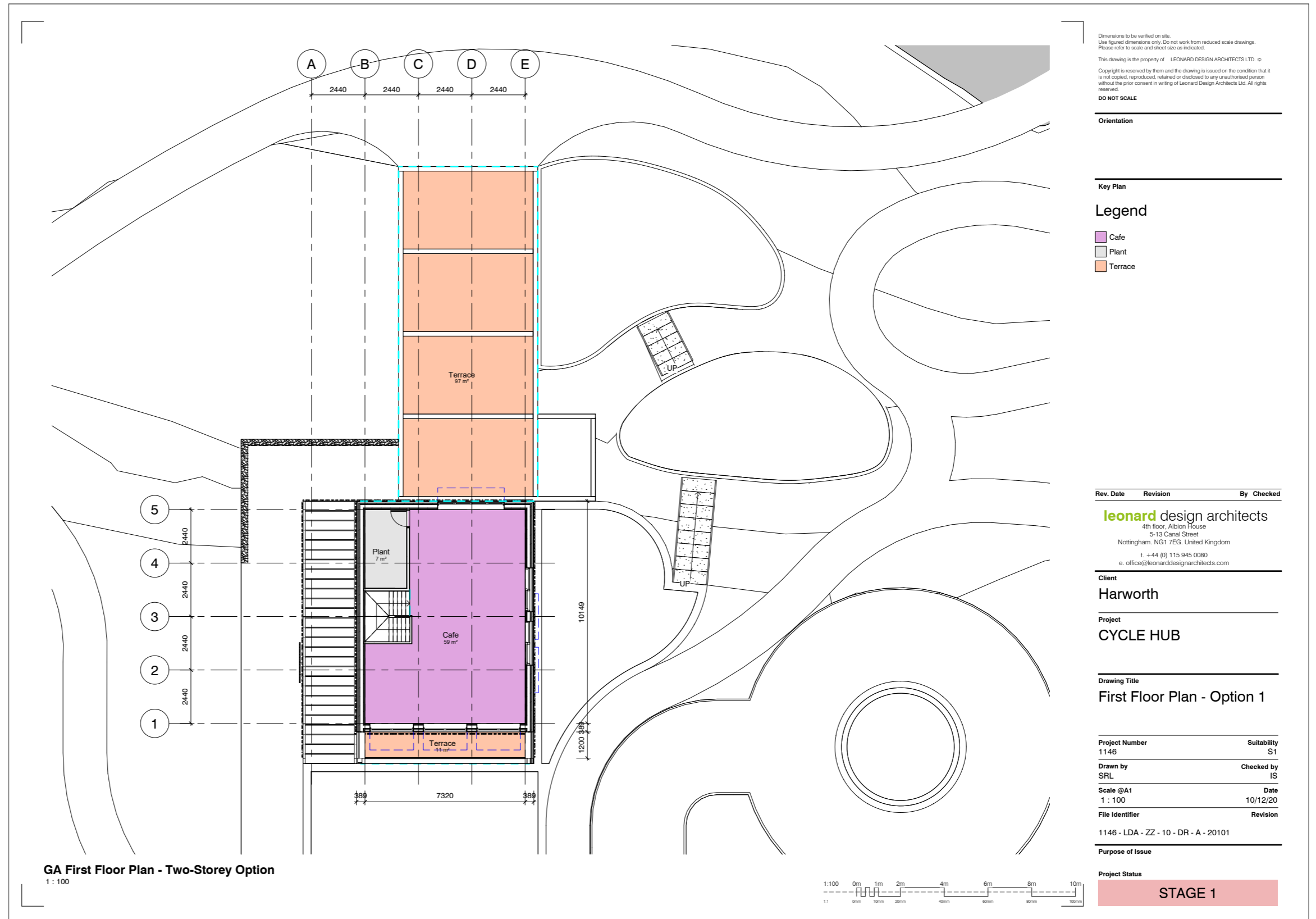
Option 1: First Floor key points:

The first floor is the Cafeteria, Terrace and Plant Room. This can be accessed from below or from the top of the containers. Photovoltaic panels can plug-in on the roof.

First Floor:

Cafeteria seating: 59m²
 Plant: 7m²
 Viewing Terrace: 108m²

GIA: 80m² + 108m² Terrace



THORESBY VALE CYCLE HUB

leonard design architects

4.0 OPTION 1: Two-Storey Option: Vision



THORESBY VALE CYCLE HUB

leonard design architects

4.0 OPTION 1: Two-Storey Option: Vision



THORESBY VALE CYCLE HUB

leonard design architects

4.0 OPTION 1: Two-Storey Option: Vision



THORESBY VALE CYCLE HUB

leonard design architects

4.0 OPTION 1: Two-Storey Option: Vision



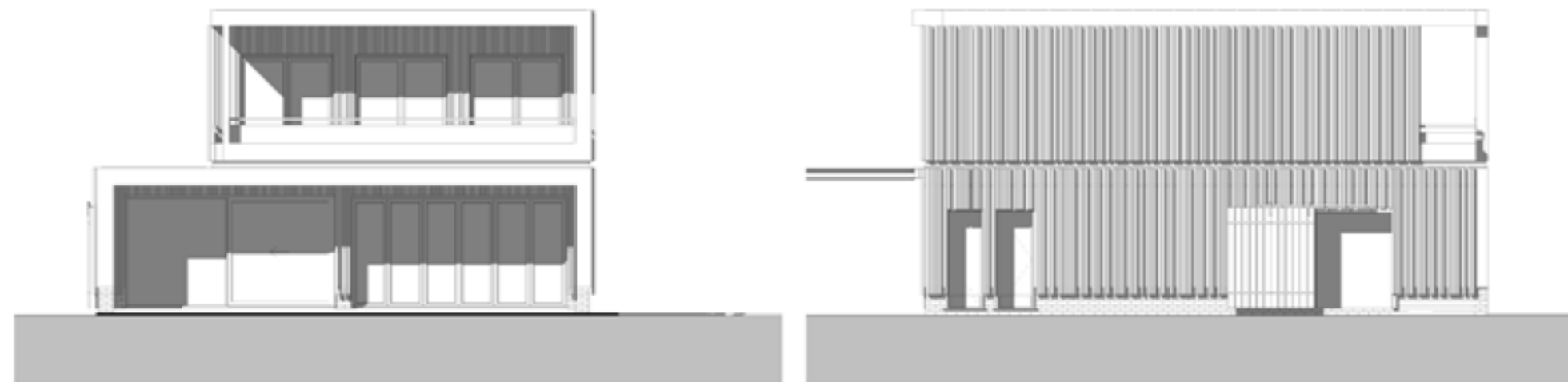
THORESBY VALE CYCLE HUB

4.0 OPTION 1: Two-Storey Option: Elevations



Cycle Hub Elevation North - Two-Storey Option
1:50

Cycle Hub Elevation East - Two-Storey Option
1:50



Cycle Hub Elevation South - Two-Storey Option
1:50

Cycle Hub Elevation West - Two-Storey Option
1:50

Dimensions to be verified on site.
Use figure dimensions only. Do not work from reduced scale drawings.
Please refer to scale and sheet size as indicated.

This drawing is the property of LEONARD DESIGN ARCHITECTS LTD. ©
Copyright is reserved by them and the drawing is issued on the condition that it is not copied, reproduced, related or disclosed to any unauthorised person without the prior consent in writing of Leonard Design Architects Ltd. All rights reserved.

DO NOT SCALE

Orientation

Key Plan

Rev. Date	Revision	By	Checked

leonard design architects
4th floor, Albion House
2-13 Canal Street
Nottingham, NG1 7EG, United Kingdom
t. +44 (0) 115 945 0080
e. office@leonarddesignarchitects.com

Client
Harworth

Project
CYCLE HUB

Drawing Title
Cycle Hub Elevations - Two-Storey Option

Project Number
1146

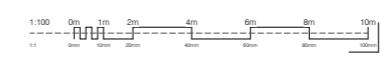
Drawn by
SRL

Scale @A1
1:50

Date
10/12/20

File Identifier
1146 - LDA - ZZ - 00 - DR - A - 22001 -

Purpose of Issue
STAGE 1



THORESBY VALE CYCLE HUB

5.0 OPTION 2: Ground floor only

Option 2: key points:

Option 2 is a ground floor only building with a viewing gallery above linked from the landscape. It contains the following:

Front of house:

- Cafeteria: 34m²
- Kitchenette: 9m²
- Bike Shop: 29m²
- 4 toilets: 12m²
- Plant: 3m²
- Bike storage
- 2no 40ft containers: 60m²

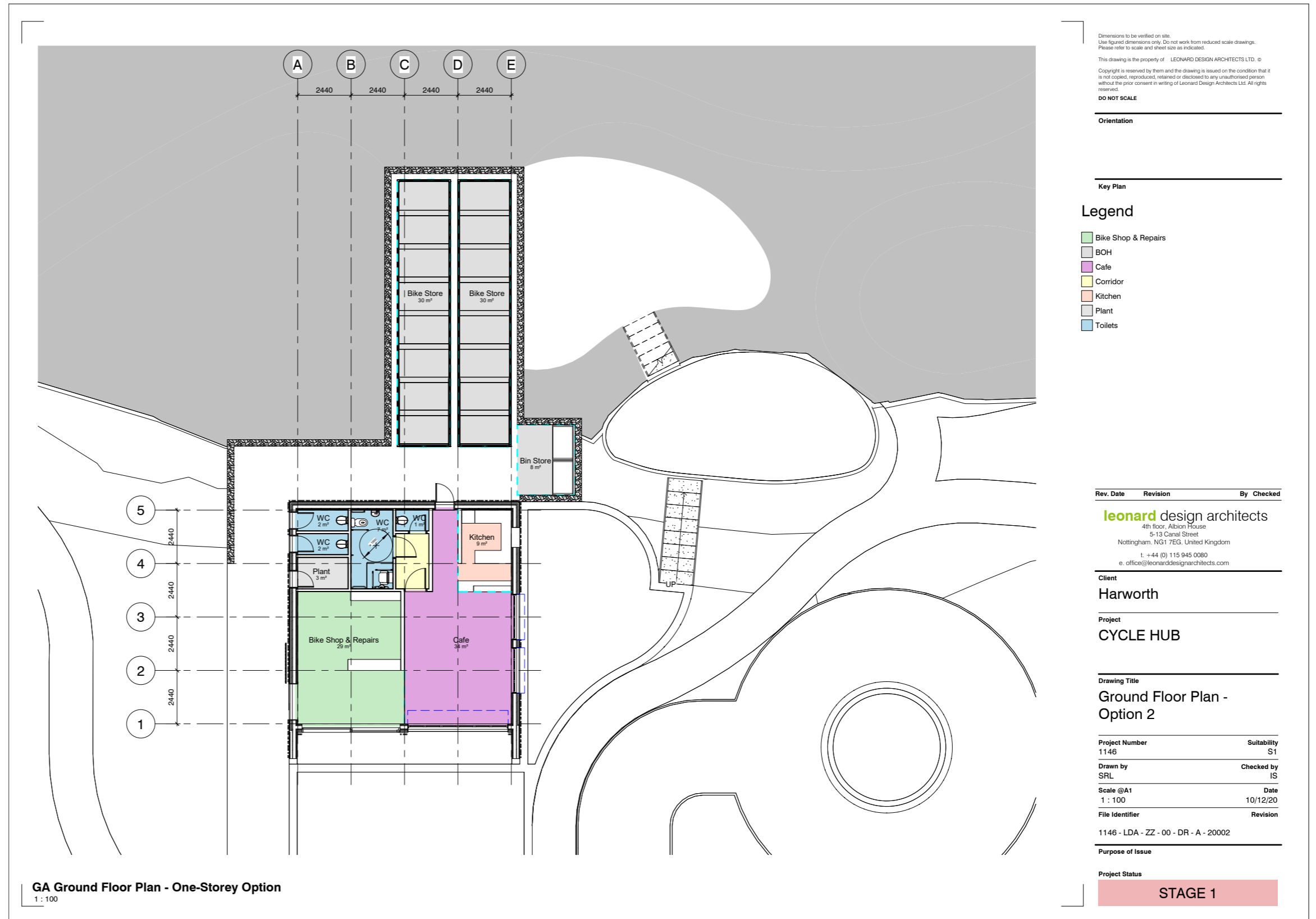
The uncovered cycle area can be utilised for bike storage and bike drop off as well as repair

Approach and entrance

Key Diagram: The principal is that the customer comes in to the front of house progresses to the rent offices. They then progress through the corridor to the outside and receive their bikes then go into the bike tracks.

Terraced landscape

This can be composed of layers of earth built up to meet the same level as the containers at the rear.



THORESBY VALE CYCLE HUB

5.0 OPTION 2: Ground floor only: Vision

leonard design architects



THORESBY VALE CYCLE HUB

5.0 OPTION 2: Ground floor Only: Vision

leonard design architects



THORESBY VALE CYCLE HUB

5.0 OPTION 2: Ground floor Only: Vision

leonard design architects



THORESBY VALE CYCLE HUB

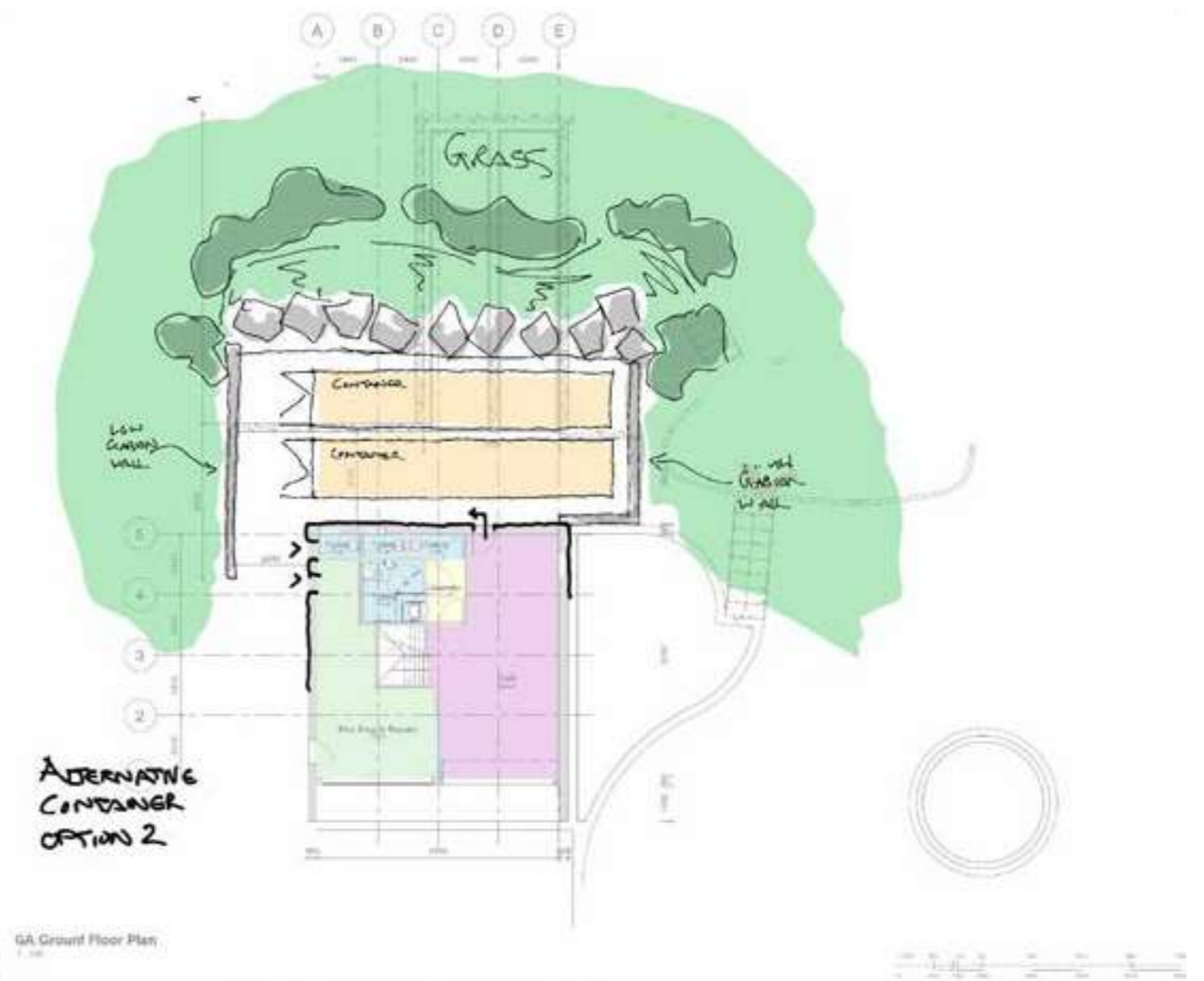
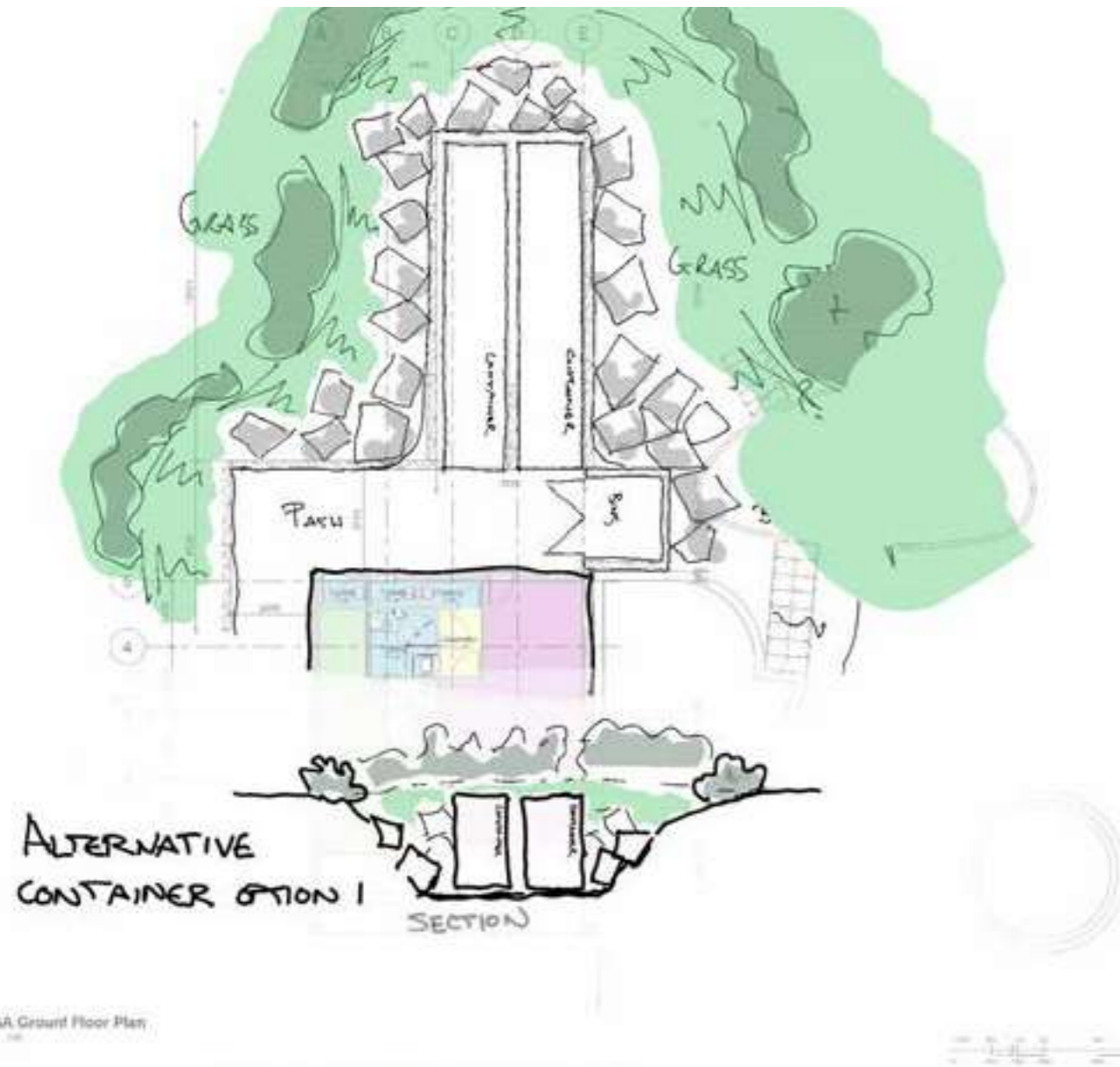
leonard design architects

5.0 OPTION 2: Ground floor Only: Vision



THORESBY VALE CYCLE HUB

6.0 ALTERNATIVE STORAGE ARRANGEMENTS



THORESBY VALE CYCLE HUB

7.0 PRECEDENT

leonard design architects







UK Offices

Nottingham (Head Office)

Albion House
5-13 Canal Street
Nottingham, NG1 7EG

+44 (0) 115 945 0080

London

Baird House
15-17 St Cross Street,
London, EC1N 8UW

+44 (0) 207 440 9960

Global Offices

Kuala Lumpur

Unit 11-01A
Vida Bukit Ceylon, Jalan Ceylon
50200 Kuala Lumpur

+60 (0)3 2022 2105

Australia

Level 1
60 Miller St
North Sydney, NSW 2060

+61 (0) 498 323 080